

# Osmington Bay

Year 6

23<sup>rd</sup> – 27<sup>th</sup> September





<http://www.pgl.co.uk/en-gb/adventure-holidays/parents/videos-for-parents#.VqYwlo0pXIU>

# Rationale

- **Support Curriculum**
  - PE – Outdoor and Adventurous Activities
  - PSHE – Responsibility, relationships, respect
  - Geography – Coasts
- **Life Skills** – Teamwork, problem solving
- **Attitudes** – New opportunities, confidence, self esteem, independence...
- **Social skills** – Communication, leadership, developing relationships
- **Positive experience** - Engagement and achievement and fun!





# On the way

We will be leaving school in the morning (time TBC) to allow a stop at Avon Heath Country Park for lunch.

Our aim is to arrive at Osmington Bay by 3pm.

# Monday

- Children arrive at centre
- Children unpack and tour site
- Dinner
- Evening activity



# Tuesday - Thursday

- Breakfast
- Activities x 2
- Lunch
- Activities x 2
- Dinner
- Evening Activity
- Bed



# Friday

- Breakfast
- Activities x 2
- Lunch
- Depart at 2pm from Centre
- Arrive at school approx. 5pm



Welcome Home!

# Possible activities

- Dragon Boating
- Aeroball
- Giant Swing
- Climbing
- Zipwire
- Raft building
- Trapeze
- Archery
- Abseiling







# Important Information

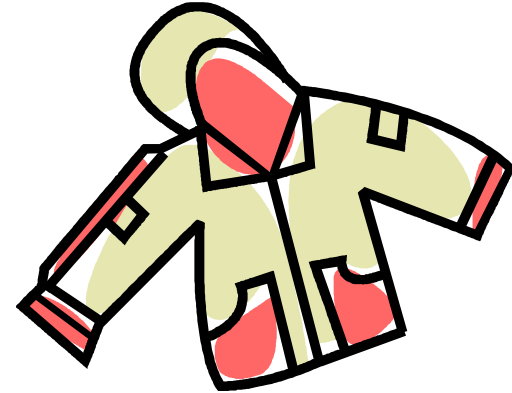
- Accommodation – Rooms sleep 4 each with own toilet and shower
- Food – Breakfast, lunch, evening meal provided
- Staffing – 6 adults including both class teachers. Centre has a staff member on duty 24 hours a day.

# Food

- A choice of meals is provided
- They aim to provide “fresh, tasty and nutritious dishes which are attractive to children”
- Specific dietary needs will be catered for
- “It is a matter of pride and principle that no child leaves a PGL dining room hungry.”

# Kit List Example

- Towel
- Wash kit
- Water bottle
- Plastic bags for laundry and wet clothes
- Pyjamas
- Warm jumper or fleece and a hat and gloves
- Waterproof jacket and trousers
- Change of clothes for each day
- Slippers, or clean indoor shoes
- Sun block and sun hat (if appropriate)
- Medication (where appropriate given to your Group Leader)
- Trainers (x2 pairs) and sturdy walking shoes
- Lip balm





# Shop

- There is a small shop on site. Children will be timetabled to visit if they wish.
- Children may bring £5 in a named wallet/purse which must be handed to the class teacher at the start of the trip.



# Phones

- Children are not to bring mobile phones on the trip.
- For emergencies only we provide a number to contact the centre.



# Cameras or tablets

- Children are not permitted to take electronic devices.
- Photos will be taken on the school cameras.



Questions?